

TASC Conversations with Decision  
Makers



Tánaiste  
Leo Varadkar



# Topics

---

- Low Pay
- Unequal Covid Pandemic
- How does the centre-right address inequality?

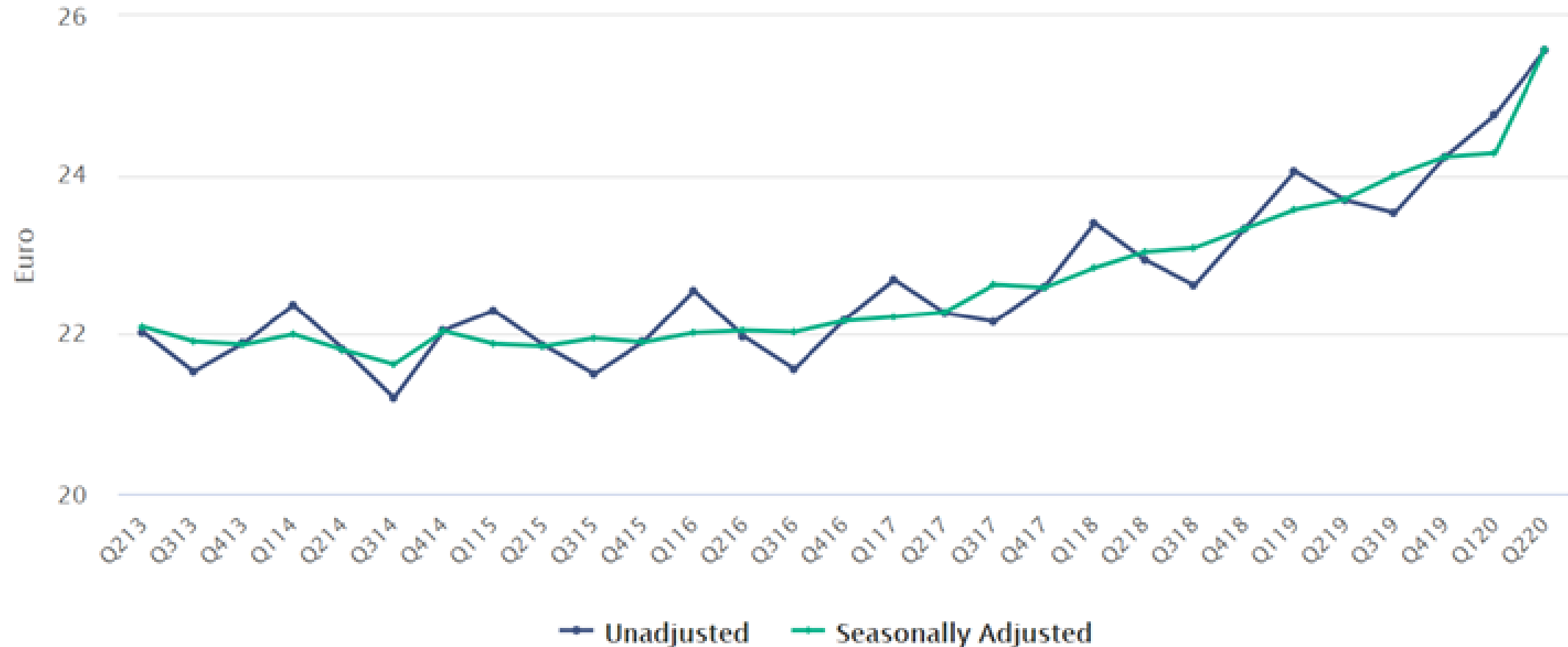


# Low Pay

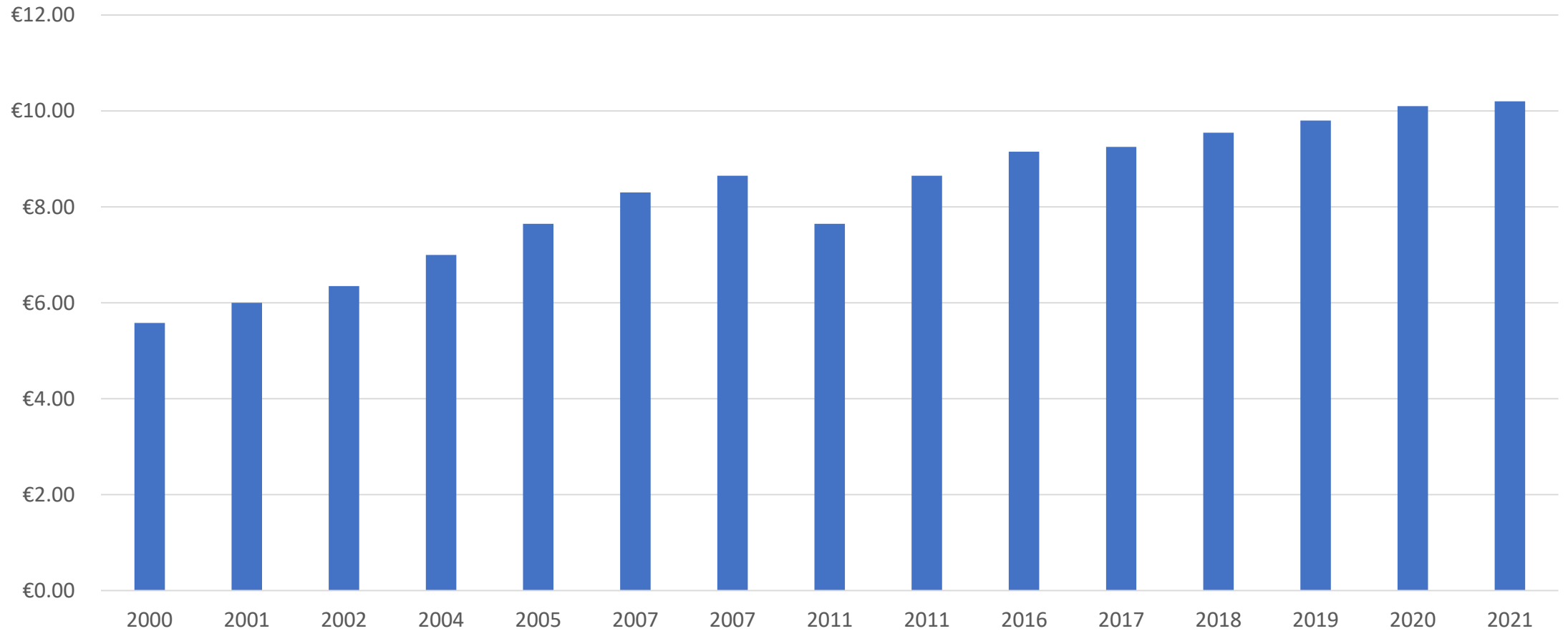
---

- Is Ireland really a low pay economy?
- Low Pay is expensive for Government and undesirable for Society but competitiveness does count.
- What can we do about it?

# Average annual hourly earnings 2013-2020 (CSO)



# National Minimum Wage 2000-2021





# Action on Low Pay (The State we are in – TASC)

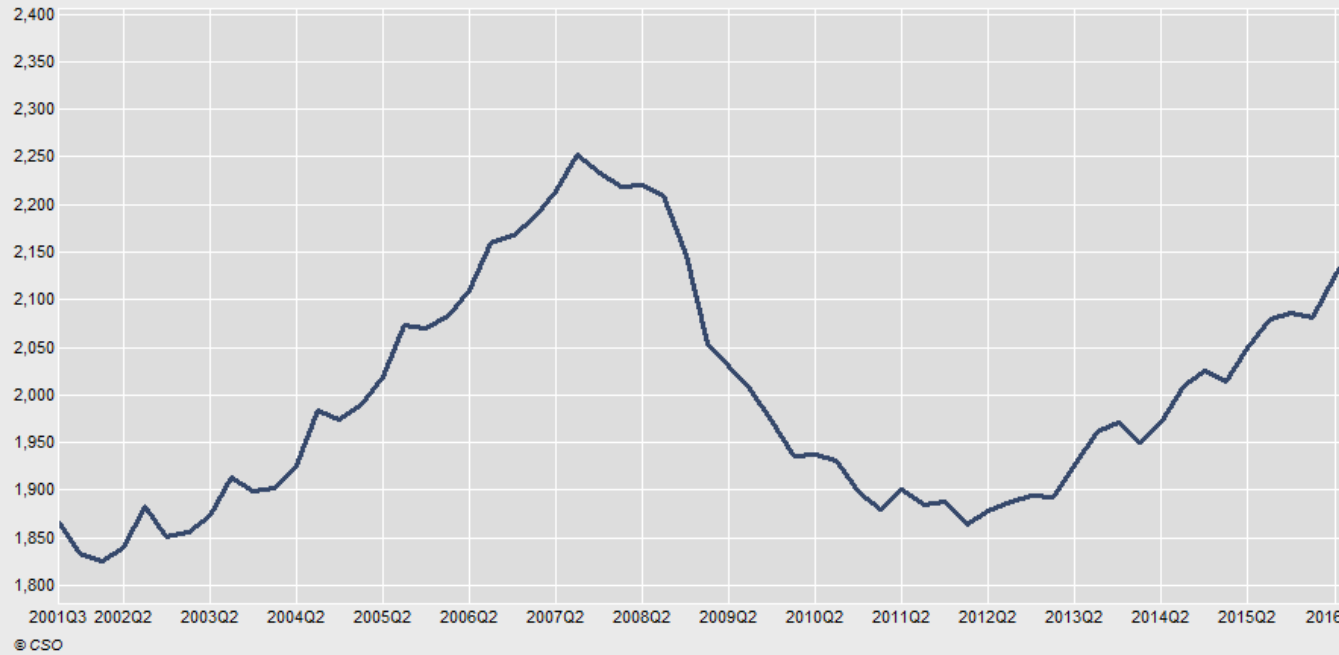
- Living Wage
  - Next Public Sector Pay Deal
  - Social Insurance Benefits/Sick Pay
  - Cost of Public Services
  - Sectoral Bargaining
  - Housing Costs/Cost of Living – Reduced Executive Compensation
-

1. Covid: an agent for inequality –  
Health impact v Economic impact

2. Covid: an agent for a change of  
heart

# Employment data

Persons aged 15 years and over in Employment (Thousand)  
by Quarter  
In employment, Both sexes (Thousand)

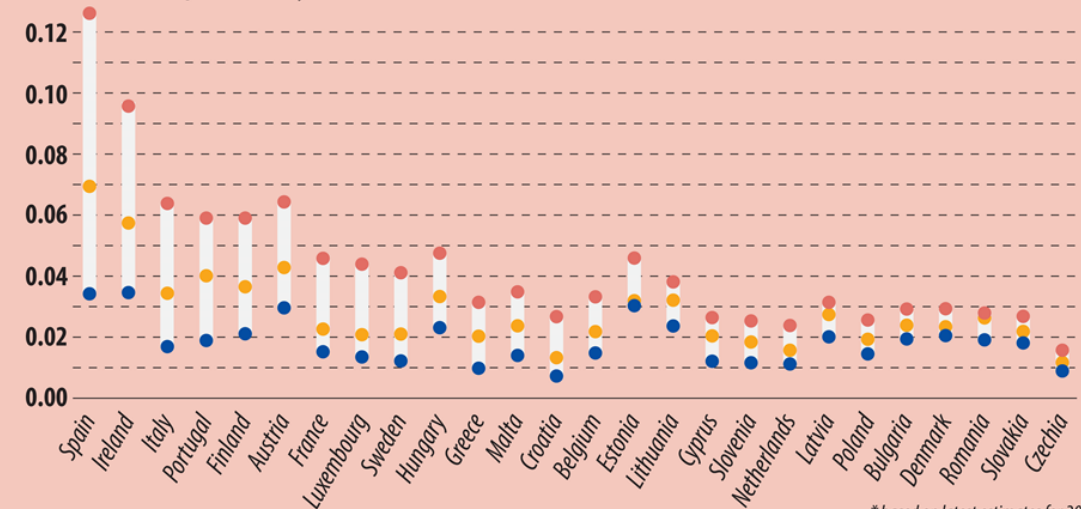


## Risk of losing job in Q2 2020

by income\* from work

(measured as probability from 0 to 1)

- high income earners
- middle income earners
- low income earners



\* based on latest estimates for 2019  
Germany: data not available





# A more secure society and economy post-pandemic

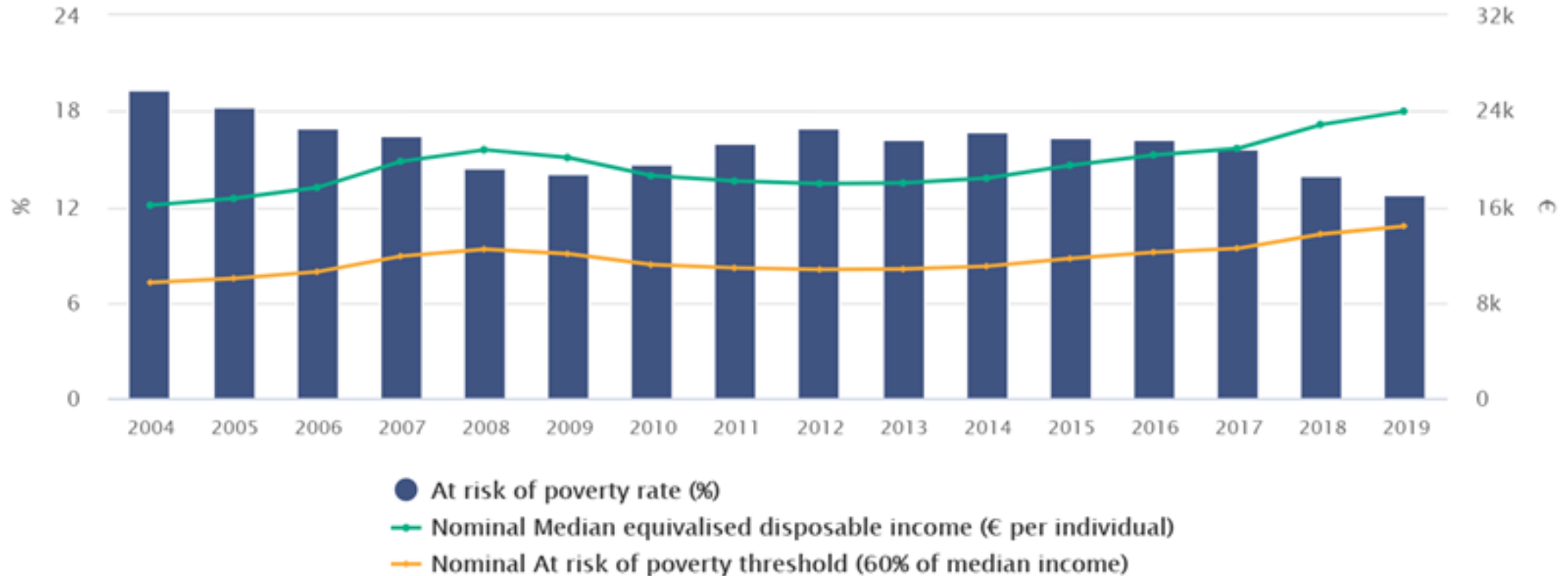
1. Low Pay
  2. Sick Pay
  3. Modern European Social Insurance
  4. Pensions (auto-enrolment)
  5. Cost of Healthcare
  6. Housing Security
  7. Remote Working
  8. Lifelong Education
  9. Right to a Second Chance Education
  10. Representation
-



# How does the centre-right address inequality?

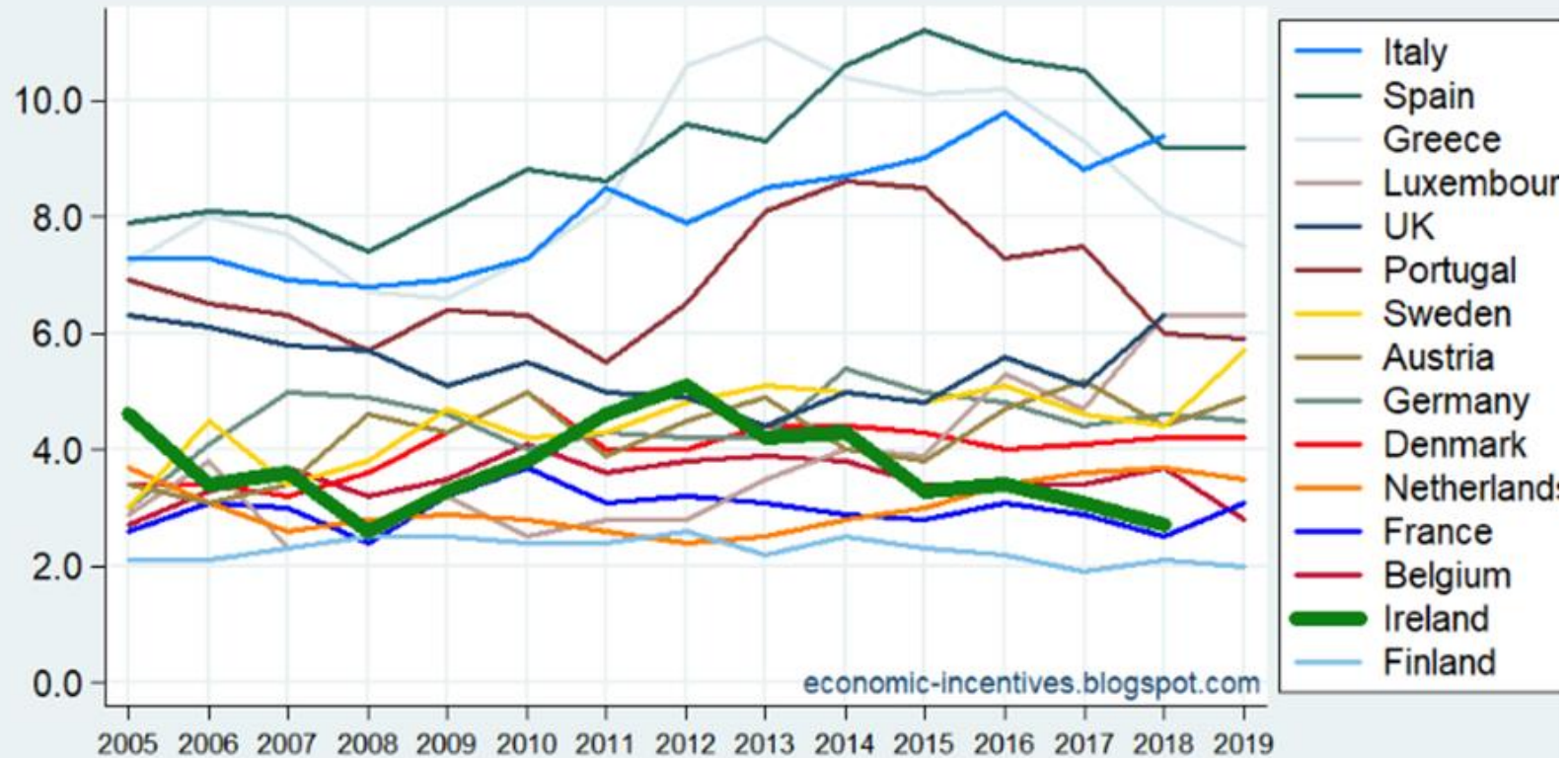
- Social Market Economy
  - Personal Freedom
  - Globalism/Multi-lateralism
  - Equality of Opportunity
-

# Nominal Equivalised Disposable Income and Poverty Rates, 2004 to 2019 (SILC)



## EU15: At-Risk-Of-Poverty, 40% Cut-Off

Share of population living in households with equivalised disposable income below 40% national median




Source: Eurostat, SILC [ilc\_li02]

## Ireland: Gini Coefficient

Gini Coefficient for Equivalised Disposable Income, 3-Year Trailing Average, 2006-2019



**Source:** CSO, Survey of Income and Living Conditions

- 
- Wealth has to be created (Jobs, Enterprise, the Economy)
  - Stable Public Finances and Politics
  - Higher Pay
  - Better Welfare
  - Housing
  - Access to Affordable Public Services
- 